

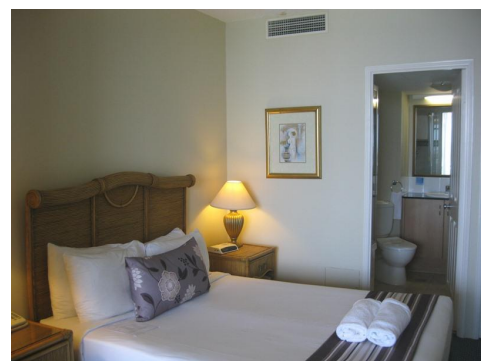
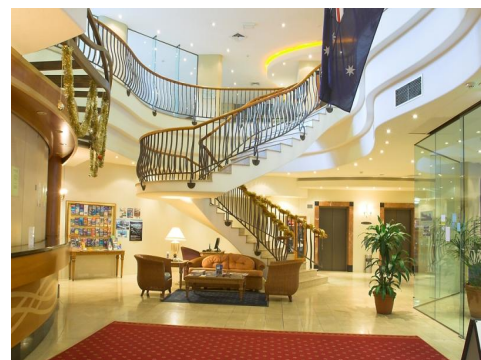
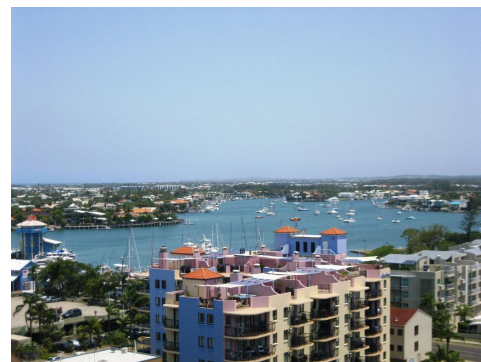
Absolutely Breathtaking Panorama  
PRICE REDUCTION !

## 11 Mooloolaba Esplanade, Mooloolaba



This TOP FLOOR holiday apartment features stunning 'eagle nest' river, marina & night-light views from Mooloolaba's prestigious Landmark building, ideally located directly opposite the patrolled area of Mooloolaba beach. With restaurants, cafes & boutique shopping at your door, this beautifully presented apartment provides the perfect 'weekend getaway'.

Boasting 9' ceilings with a showcased granite & marble finish, the fully furnished apartment grosses over \$36,000 per year solely thru holiday bookings. 1st class in-house facilities only complement the appeal for the astute investor.



**Michael Cornilsen**

phone 07 5478 0000  
mobile 0414 233 026